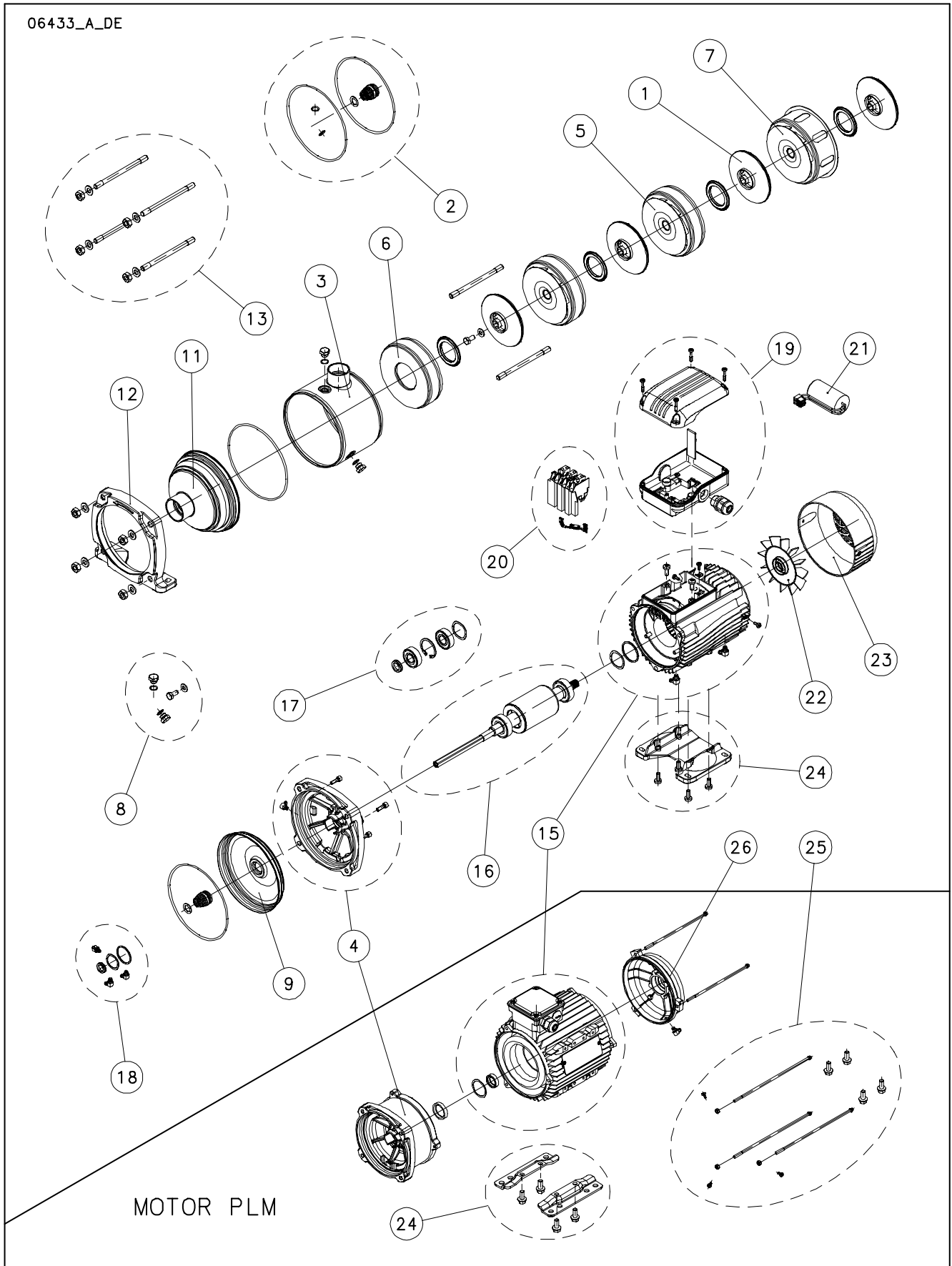


10 HM..P

06433_A_DE

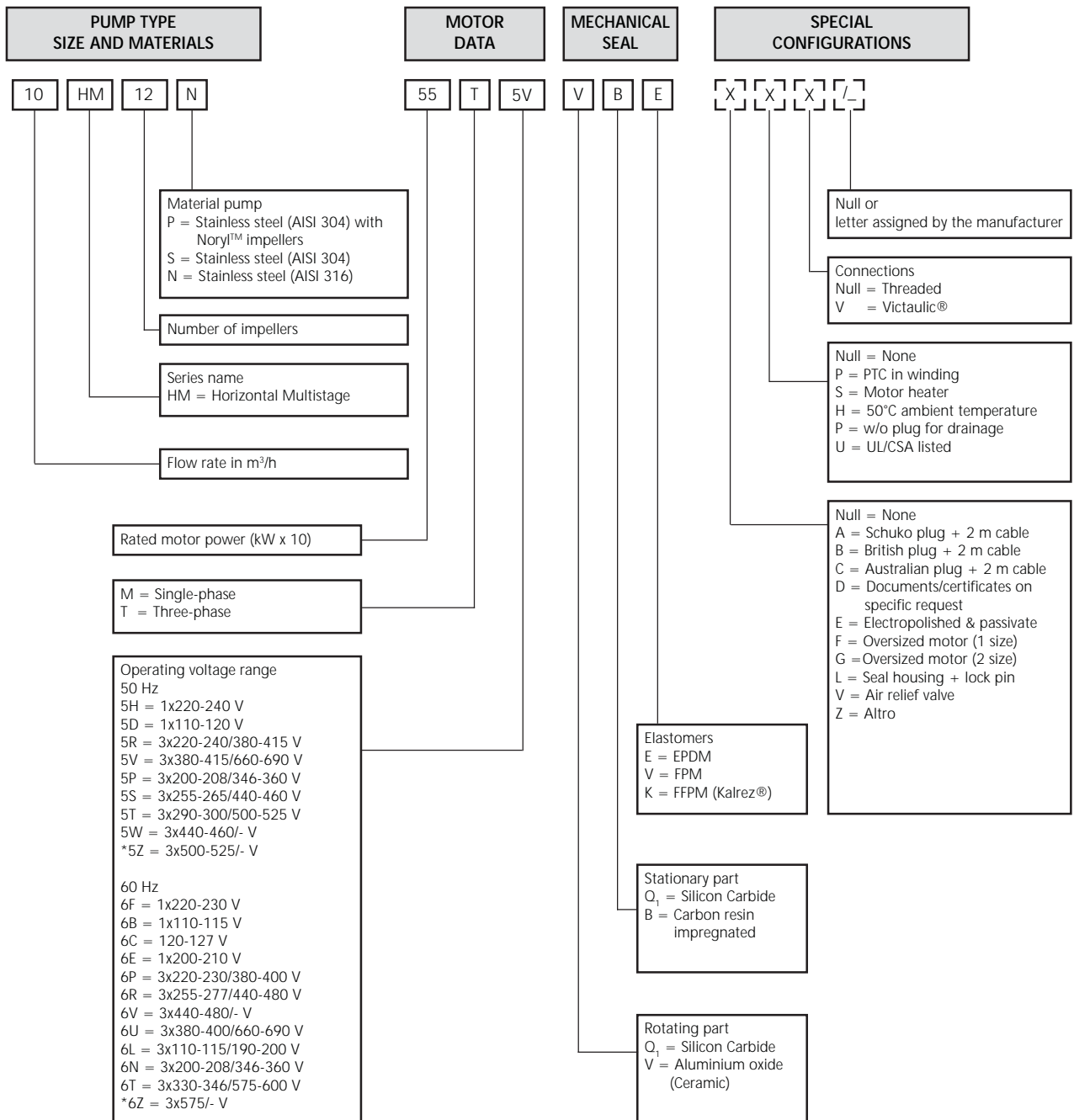


Lowara and Vogel Pumpen are a trademark of Xylem Inc. or one of its subsidiaries.
Goulds is a registered trademark of Goulds Pumps, Inc. and is used under license.

N.	Descrizione it	Description en	Description fr	Beschreibung de	Descripción es	Descrição pt
1	Girante	Impeller	Roue	Laufrad	Rodete	Impulsor
2	Kit tenuta mecc. + OR	Mechanical seal + OR kit	Kit garniture seal + joints toriques	Gleitringsdichtung + OR	Kit sello mec. + junta tórica	Kit Empanque mecanico + O-Ring
3	Camicia	Sleeve	Chemise	Mantel	Camisa	Camisa
4	Lanterna + viti	Adaptor + Screws	Lanterne + Visserie	Passfeder + Schrauben	Adaptador + Tornillos	Adaptador + parafusos
5	Diffusore	Diffuser	Diffuseur	Diffusor	Difusor	Difusor
6	Stadio iniziale	Initial stage	Premier étage	Erste Stufe Diffusor	Etapa inicial	Primeira célula
7	Diffusore finale	Last stage diffuser	Diffuseur dernier étage	End Diffusor	Difusor final	Difusor final
8	Tappi + OR / Vite girante	Plug + ORing / Impeller screw	Bouchon + joint torique / Roue Vie	Stecker + OR / Laufrad Schraube	Tapón + junta tórica / Tornillo de rodete	Bujão + OR / Parafuso do impulsor
9	Disco portatenuta	Seal housing disc	Disque d'étanchéité	Dichtungsscheibe	Disco de alojamiento retén	Disco porta-vedante
11	Testata	Head	Tête	Kopf	Cabezal	Cabeça
12	Anello con piede	Ring with foot	Anneau avec pied	Ring mit Fuß	Anillo a pie	Anel com pé
13	Tiranti pompa	Pump tie rods	Tiges de pompe	Pumpen spannstangen	Tirantes de bomba	Tirantes de bomba
15	Cassa statore	Stator housing	Carcasse stator	Statorgehäuse	Carcasa estator	Carcaga estator
16	Albero rotore completo	Shaft rotor complete	Arbre rotor au complet	Rotorwelle Komplete	Eje rotor complete	Rotor completo
17	Cuscinetti - Anelli	Bearings - Rings	Roulements - Anneaux	Lagers - Rings	Cojinetes - Anillos	Rolamentos - Anels
18	Anelli tenuta - Tappi	Oil seals - Plugs	Bagues étanchéité-Bouchons	Abdichtungsringen-Schrauben	Anillos estanqueidad- Taponés	Retenores - Bujões
19	Scatola morsettiera	Terminal box	Boite a bornier	Klemmenkasten	Caja de bornes	Caixa de terminais
20	Morsettiera / Plug in	Terminal block / Plug in	Bornier enfichable / Plug in	Steck-Klemmkasten / Plug in	Place de bornes / Plug in	Terminais / Plug in
21	Condensatore	Capacitor	Condensateur	Kondensator	Condensador	Condensador
22	Ventola	Fan	Ventilateur	Lüfterrad	Ventilador	Ventilador
23	Copriventola	Fan cover	Couvercle de ventilateur	Lüfterradhaube	Tapa ventilador	Cobertura do ventilador
24	Piede motore	Motor foot	Pied de moteur	Motorfuß	Pie del motor	Pé do motor
25	Tiranti / Viteria motore	Motor Tie rods / Screws	Tiges / Visse moteur	Motor- Spannstangen / Schrauben	Tirantes / Tornillos motor	Tirantes / Parafusos motor
26	Scudo posteriore NDE	Rear shield NDE	Flasque arriere NDE	Hinteren Schild NDE	Escudo posterior NDE	Proteção posterior NDE
N.	Beschrijving nl	Περιγραφή el	Açıklama tr	Kuvaus fi	Описание ru	Opis pl
1	Waaier	Φτερωτές στροφαείο	Pompa rotorun	Juoksupyörän	импеллер	Wirnik
2	Kit mech. afdichting + O-ring	Μηχανική σφραγίδα στεγανότητας Σετ + OR	Mekanik salmastra kiti + O-Ring	Mek. akseliitiiviste + O-rengassarja	Комплект мех. печать + OR	Zestaw uszczelniaczy mech. + OR
3	Mantel	Κέλυφος	Gömlük	Muhvi	Муфта	Plaszcz
4	Lantaarnstuk met schroeven	προσαρμογέα + βιδών	Adaptör + Vida	Adaptér + Ruuvi	адаптер + винтов	Piasta + łączników gwintowych
5	Diffusor	διαχυτήρας	Difüzör	Diffuusioyksikön	Диффузор	Dyfuzor
6	Eerste trap	Πρώτο στάδιο	İlk kademe	Ensivaihe	начальной стадии	Dyfuzor Początkowa
7	Diffusor laatste trap	Τελικός διαχυτήρας	Son difüzör	Loppuvaiheen diffusori	Концевой диффузор	Dyfuzor końcowy
8	Pluggen + OR / Waaier schroef	Πώμα + OR / βιδών στροφαείο	Fişi + O-Ring / Rotorunu vida	Tulppa + Oring /Juoksupyörän ihmishenkiä	штпсель + OR / импеллер винтов	Zatyczka + OR / Śrubowy wirnika
9	Dichtingssteunplaat	Δίσκος μηχανικού στυπιοθλίπτη	Sızdırmazlık diskı	Tiivisteen kannatuslevy	Диск держателя прокладки	Tarcza uszczelki
11	Kop	Κεφαλή	Kafa	Pääkohta	головка	Głowica
12	Ring met voet	Ρινγκ με Πόδι	Ayak halkası	Rengas jalka	Кольцо с ног	Pierścień z podnóża
13	Pomp trekstangen	Ράβδοι σύνδεσμοι αντλία	Çekme çubukları pompası	Pumppu ankkurirauta	Насос адаптер	Pompy Szpilki gwintowane
15	Statorhuis	Έδρα κατοικί	Stator karteri	Staattoni kaapit	Корпус статора	Stator Nadawcza
16	Rotor as compleet	επάνω και το κάτω μέρος του	Rotor mili	Roottori akseli	ось ротора	Wałek kompletny (z rotorem)
17	Lagers - Ringen	Τριβεία- δακτύλιοι	Rulmanlar - Ringes	Laakeri - Rengas	Подшипник - кольцами	Łożyska – pierścienie
18	Zegel ringen - Vulpluggen	πετρελαίου παρεμβύσματα - πώμα	Fok ringes - Burg/mafsäl	Öljy tiivisteet - Tulppa	прокладки для нефти - штпсели	Uszczelka olejowa – zatyczki
19	Kabelkast	Πίνακες τερματικών	Terminal Kutu	Liitinkotelon kansi	соединители коробка	Skrzynka zaciskowa
20	Klemmenbord / Plug in	Τερματικές μονάδες / Plug in	Kaide bacaklar / Plug in	Liitinalusta / Plug in	контактная колодка / Plug in	Podstawa ze stworzeniami Plug in
21	Condensator	πυκνωτ	Kondansatör	Kondensaattori	конденсатор	Kondensator
22	Ventilator	Ανεμιστήρ	Vantilatör	Tuuletin	вентилятор	Wentylator
23	Ventilatorkap	Ανεμιστήρ Ελάσματα κάλυψης	Vantilatör kapaşı	Tuulettimen kanne	вентилятор крышка	Oslona wentylatora
24	Motor voet	Πόδι κινητήρα	Makina ayak	Moottori jalka	Корпус статора + двигатель стопы	Silnik noga mebla
25	Trekstangen / Schroevena motor	Κινητήρα ράβδοι σύνδεσμοι / βίδες	Makina çekme çubukları / Vidalar alışveriş	Moottorin Ankkurirauta / Ruuvit	мотора адаптер / винтами	Silnika Szpilki gwintowane / Srubeczka
26	Achtergedeelte Motorhuis NDE	Πίσω πετάσμα NDE	Arka koruma NDE	Renkaat kumit NDE	назад щит NDE	Tylna tarcza NDE



e-HM™ SERIES IDENTIFICATION CODE



EXAMPLE: 10HM12N55T5VQBE
HM series electric pump, flow rate 10 m³/h, number of impellers 12, N version (AISI 316), rated motor power 5,5 kW, three-phase 50 Hz, voltage 380-415/660-690 V, Silicon/Carbide/EPDM mechanical seal.

* For uses other than EN 60335-2-41.
For special configurations please contact the sales network.



10HM..P "Sleeve Design"

ELP 2 P					
ELP 1-, 220-240V 50Hz ->	10HM02P11M	10HM03P15M	10HM04P22M	10HM05P22M	
	104600870	104600880	104600890	104600900	
ELP 3-, 230-400V 50Hz ->	10HM02P11T	10HM03P15T	10HM04P22T	10HM05P30T	10HM06P30T
	104600370	104600380	104600390	104600400	104600410
Stages number ->	2	3	4	5	6
kW ->	1,10	1,50	2,20	2,20	-
				3,00	3,00

Pump Kit

*2	Mech seal D17 +OR ->	VBE	KL01AFN	Std -> Seal VBE - OR EPDM
		QBE	KL01AFP	
		QOE	KL01AFQ	
		VBV	KL01AFR	
		QBV	KL01AFS	
		QQV	KL01AFT	
		QBK	KL01AFY	
		QQK	KL01AFZ	
	OR EPDM	KL02ACF	10-22HM Sleeve Design	
	OR FPM	KL02ACK		
	OR FFKM	KL02ACN		
8	Plugs S.S. EPDM + imp. screw	KL34AA0		
	Plugs S.S. FPM + imp. screw	KL34AA3		
	Plugs S.S. FFKM + imp. screw	KL34AA6		

Pump Single Unit

3	Sleeve with pipe	156504600	156504600	156504610	156504620	156504630
13	Pump tie rods M10	KL40AAB	KL40AAB	KL40AAC	KL40AAD	KL40AAF
*1	Impeller Noryl 10HMP	150760640	150760640	150760640	150760640	150760640
5	Diffuser	152803130	152803130	152803130	152803130	152803130
		1	1	2	3	4
6	First stage diffuser	152802930				
7	Last stage diffuser w/wear ring	152803530				
9	Seal housing disc	160103970				
11	Head	151404130				
12	Ring with foot	161431600				

Motor Kit

4	Adaptor w/screws	KL21AAQ	KL21AAQ	5KL21AAF	5KL21AAF	
		KL21AAQ	KL21AAQ	5KL21AAF	5KL21AAF	5KL21AAF
15	Motor casing + Stator	KL25AAL	KL25AAN	5KL25ABQ	5KL25ABQ	
		KL25ADF	KL25ADH	5KL25AAB	5KL25ABP	5KL25ABP
16	Shaft rotor complete hexagon	KL09ADN	KL09ADP	5KL09AC0	5KL09AC4	
		KL09ADQ	KL09ADR	5KL09AC1	5KL09AC2	5KL09AC3
17*	Bearings - Rings	KL11AAU	KL11AAU	5KL11AAY	5KL11AAY	
	Bearings Type	6204/6204HE		6204/6305HE		
	Bearings - Rings	KL11AAU	KL11AAU	5KL11AAY	5KL11AAY	5KL11AAY
	Bearings Type	6204/6204HE		6204/6305HE		
18*	Oil seals - Plugs	KL03ABP	KL03ABP	5KL03AAA	5KL03AAA	5KL03AAA
19	Terminal box	KL30AAB	KL30AAB	5KL30AC2	5KL30AC2	
		KL30AAA	KL30AAA	5KL30AAE	5KL30AAE	5KL30AAE
23	Fan cover w/screws	KL29AAE	KL29AAE	5KL29AAA	5KL29AAA	
		KL29AAE	KL29AAE	5KL29AAA	5KL29AAA	5KL29AAA
24	Motor foot / feet	KL23AAD	KL23AAD	5KL23AAA	5KL23AAA	
		KL23AAD	KL23AAD	5KL23AAA	5KL23AAA	5KL23AAA
25	Motor Tie rods PLM90			5KL22AAA	5KL22AAA	5KL22AAA
26	Shield NDE			5KL20AA7	5KL20AA7	5KL20AA7

Motor Single Unit

20	T-block 1 ~	158160500	158160510	5KL30AC4	5KL30AC4		
	T-block 3 ~	158160280	158160280	5830AAA	5830AAA	5830AAA	
21	Capacitor 1 ~	30	40	30+40	30+40		
		uF->	150990460	150990480	150990621	150990621	
		uF->	-	-	150990631	150990631	
22	Fan SM80 - PLM90	140760160	140760160	540760010	540760010		
		140760160	140760160	540760010	540760010	540760010	

* Recommended spare parts - Parti di ricambio consigliate
 * Pièces détachées conseillées - Empfohlene Ersatzteile